



Stofkaart

*Beetle, Bombom, Canova, Flink, Mali, Pure loop,
Relief, Sicla, Tondina fat en Woodstock*

Productoverzicht

Legenda

B Eco leather

C Convert D, Step(Melange), Norfolk*

D Reflect*, Revive 1*, Rolla*

E Field 2*, Oceanic*, Yoredale*

F Steelcut Quartet*, Canvas 2

G Divina 3* (Melange), Harald 3*, Fiord*, Patio*

H Safire*

* Let op: niet alle modellen kunnen in deze stof.
Kijk daarom goed op de stofkaart, op welk model deze wel kan!

Stoelen - volledig gestoffeerd



Pure Loop
Maxi

B C D
E F G H



Pure Loop
Mono

B C D
E F G H



Tondina fat

B C
E F G H

Stoelen - opdekstoffering



Canova

B C D
E F G



Mali

B C D
E F G



Pure Loop
Mono

B C D
E F G H



Relief

B C D
E F G H



Woodstock

B C D
E F G H



Kan gestoffeerd
worden in deze
stoffen

Krukken - volledig gestoffeerd



Pure Loop
Mini

B C D
E F G H



Pure Loop
Mono

B C D
E F G H



Tondina Fat

B C
E F G H

Krukken - opdekstoffering



Flink

B C D
E F G H



Pure Loop
Mono

B C D
E F G H



Relief

B C D
E F G H

Lounge/banken - volledig gestoffeerd



Beetle

B C
E F G



Bombom

B C D
E F G H



Pure Loop
Lounge

B C D
E F G H

B Eco leather

Stofgroep 2

Eco leather is geschikt voor alle modellen in het productoverzicht.

B Eco Leather



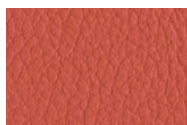
Composition: 76%PVC - 2%PU - 22%PES
 Width: 140 cm
 Weight: g/m2 540 +/-10
 Cycles (ISO 5470-2): 60000
 Colour fastness to dry rubbing (ISO 105-X12): 4/5
 Colour fastness to wet rubbing (ISO 105-X12): 4/5
 Colour fastness to light (Xenotest - blu scale) (ISO 105-B02): 6

Adhesion (ISO 2411): > 40
 Tensile strenght (UNI EN ISO 1421): 600 long.
 Tensile strenght (UNI EN ISO 1421): 310 trasv.
 Elongation at break % (UNI EN ISO 1421): 57 long.
 Elongation at break % (UNI EN ISO 1421): 120 trasv.
 Tear strenght (UNI EN ISO 4674): 50 long.
 Tear strenght (UNI EN ISO 4674): 50 trasv.

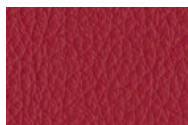
Cycles (UNI 4818-13): 100000
 Fireproof test: EN 1021-2:2006 / UNI 9175 classe 1 IM /
 BS5852-1:1979 part I - TB 117:2013



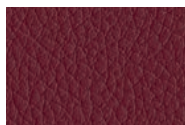
SE1007



SE1008



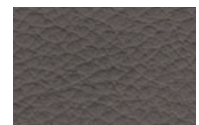
SE1009



SE1019



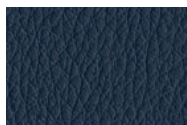
SE1033



SE1035



SE1030



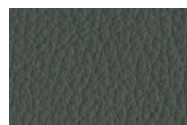
SE1014



SE1021



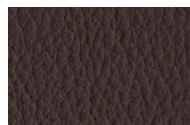
SE1031



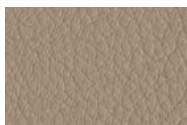
SE1012



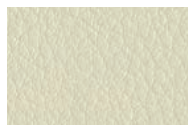
SE1023



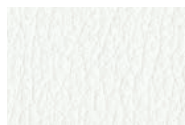
SE1006



SE1018



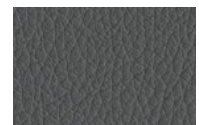
SE1002



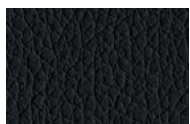
SE1001



SE1015



SE1024



SE1017

Convert D is geschikt voor alle modellen in het productoverzicht.

B Eco Leather



Composition: 76%PVC - 2%PU - 22%PES
 Width: 140 cm
 Weight: g/m2 540 +/-10
 Cycles (ISO 5470-2): 60000
 Colour fastness to dry rubbing (ISO 105-X12): 4/5
 Colour fastness to wet rubbing (ISO 105-X12): 4/5
 Colour fastness to light (Xenotest - blu scale) (ISO 105-B02): 6

Adhesion (ISO 2411): > 40
 Tensile strenght (UNI EN ISO 1421): 600 long.
 Tensile strenght (UNI EN ISO 1421): 310 trasv.
 Elongation at break % (UNI EN ISO 1421): 57 long.
 Elongation at break % (UNI EN ISO 1421): 120 trasv.
 Tear strenght (UNI EN ISO 4674): 50 long.
 Tear strenght (UNI EN ISO 4674): 50 trasv.

Cycles (UNI 4818-13): 100000
 Fireproof test: EN 1021-2:2006 / UNI 9175 classe 1 IM /
 BS5852-1:1979 part I - TB 117:2013



Step is geschikt voor alle modellen in het productoverzicht.

C Step

Gabriel®

Composition: 100% Trevira
Total width: 140 cm
Width: 140 cm
Abrasion: rubs martindale
(EN ISO 12947-2)
100,000 double rubs

wyzenbeek (ASTM D4157-07) (heavy duty upholstery)
100,000
Pilling: scale 1-5, max. 5 - EN ISO 12945-2
Light fastness: scale 1-8,

max. 8 - EN ISO 105 B02
Rubbing fastness: scale 1-5, max. 5 - EN ISO 105x12 (wet/dry) 4-5/4-5
Maintenance: wash or dry cleaning P(W).

Step is made of Trevira CS which is a polyester material suited for environments with special requirements for cleaning.



ST60011



ST60021



ST60091



ST60999



ST61149



ST62057



ST63075



ST64013



ST64159



ST64178



ST65011



ST65047



ST66148



ST67004



ST68118



ST68121



ST68159



ST68161



C Step Melange

Stofgroep 3

Step Melange is geschikt voor alle modellen in het productoverzicht.

C Step Melange

Gabriel®

Composition: 100% Trevira
Total width: 140 cm
Width: 140 cm
Rubs martindale:(EN ISO 12947-2)100,000
double rubs wyzenbeek (ASTM

D4157-07) (heavy duty upholstery)
100,000
Pilling scale 1-5, max. 5 - EN ISO 12945-2 4-5
Light fastness: scale 1-8, max. 8 - EN ISO 105-B02 5-7

Rubbing fastness: scale 1-5, max. 5 - EN ISO 105x12 (wet/dry) 4-5/4-5
Maintenance wash or dry cleaning P(W)
Step Melange is made of Trevira

CS which is a polyester material suited for environments with special requirements for cleaning.



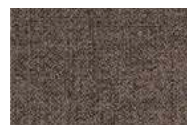
SM60004



SM60021



SM60092



SM61103



SM61149



SM61150



SM61151



SM61152



SM62057



SM64159



SM64178



SM64179



SM64181



SM65011



SM65047



SM66018



SM67004



SM68119



SM68158



SM68165

Norfolk is geschikt voor:

Bombom, Canova opdek, Flink opdek, Mali front, Pure loop lounge.

C Norfolk



Composition: 100% Polyester with flame retardant treatment Width: 140 cm
Weight: 775 g/m²
Light resistance: 6 (ISO 105-B02)

Abrasion: 50.000 Martindale
Pilling: 4 (ISO 12945-2)
Fastness to rubbing: 4-5 (Dry) 4-5 (Wet) ISO 105-X12
Test ignifugo – Fireproof test

EN 1021/ 1-2
BS 5852, crib 5
NF P 92 / 503 – 507, M1
DIN 4102, B1
UNI 9175, classe 1,IM

Cal TB 117
NFPA 260, class 1
IMO 2010 FTP part 8



NF01



NF02



NF03



NF04



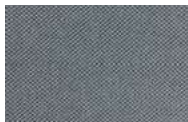
NF05



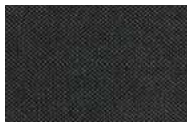
NF06



NF07



NF08



NF09



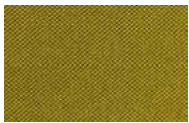
NF11



NF12



NF15



NF16

Reflect is geschikt voor:

Bombom, Canova opdek, Flink opdek, Mali front, Pure loop mono, Pure loop maxi, Pure loop lounge, Pure loop mini, Relief opdek, Sicla opdek.

D Reflect

kvadrat

Designer: Patricia Urquiola
Composition: 100% poliestre riciclato
Height: 140 cm
Selvedge: ↔
Weight: 430 g
Light resistance: 6-7

(ISO 1-8)
Abrasion: 100.000 Martindale
Colour: there may be slight differences.
Fireproof test AS/NZS 3837

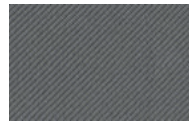
class 1, ASTM E84 Class A
ASTM E84 Class B incollato
BS 5852 crib 5 con trattamento ignifugo, BS 5852 part 1 con trattamento ignifugo, EN1021-1/2, US Cal. Bull.117-2013



RF104



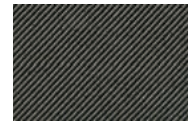
RF154



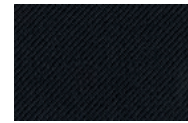
RF164



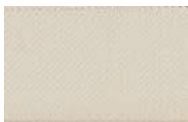
RF174



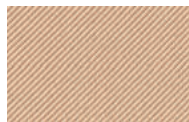
RF184



RF194



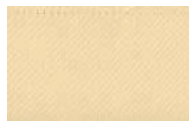
RF204



RF224



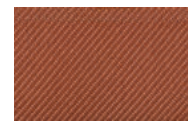
RF274



RF404



RF444



RF464



RF564



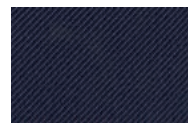
RF574



RF614



RF644



RF694



RF714



RF774



RF944



RF994

D Revive 1

Stofgroep 4

Revive 1 is geschikt voor:

Bombom, Canova opdek, Flink opdek en Woodstock opdek/front.

D Revive 1

kvadrat

Designer: Georgina Wright
Composition: 100% Recycl.
polyester FR
Height: 140 cm
Selvedge:
Weight: 420 g/lin.m

Light resistance: 5-7
(ISO 1-8)
Abrasion: 80.000 Martindale
Colour: there may be slight
differences
The environment: reduced

environmental impact
Fireproof test
BS 5852 part 1, ig. s. 0
DIN 4102 B1
EN 1021-1/2
IMO FTP Code 2010 Part 8

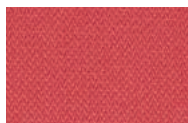
NF D 60 013 with treatment
UNI 9175 1M
US Cal. Bull. 117-2013
ONORM B1/ Q1



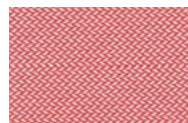
RV424



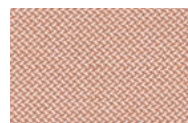
RV634



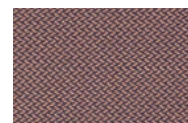
RV664



RV524



RV414



RV454



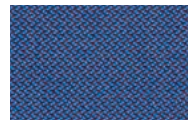
RV274



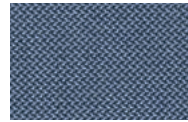
RV384



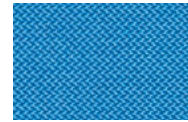
RV184



RV774



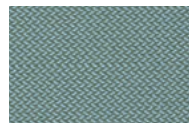
RV764



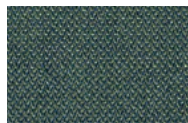
RV754



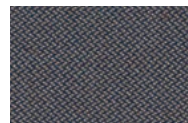
RV834



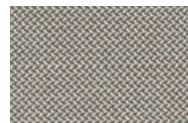
RV944



RV974



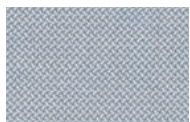
RV284



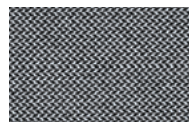
RV324



RV224



RV144



RV164



RV194

D Rolla

Stofgroep 4

Rolla is geschikt voor:
Bombom, Canova opdek, Pure loop lounge.

D Rolla

VESCOOM

Composition: 100% Recycled polyester FR
Width: 148 cm
Weight: 624 g/m²
Light resistance: 6 (ISO 105-B02)

Abrasion: 70.000 Martindale
Pilling: 4-5 (ISO 12945-2)
Fastness to rubbing: 4-5 (Dry) 4-5 (Wet) ISO 105-X12
Test ignifugo – Fireproof test

EN 1021/ 1-2
BS 5852, crib 5
NF D 60-013 (AM 18)
DIN 4102, B1
UNI 9175, classe 1.1M

Cal TB 117
NFPA 260, class 1
IMO 2010 FTP part 8



RL01



RL02



RL03



RL04



RL05



RL07



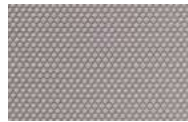
RL10



RL11



RL12



RL13



RL14



RL15



RL16



RL17



RL18



RL19



RL20

E Field 2

Stofgroep 5

Field 2 is geschikt voor:

Beetle, Canova opdek, Flink opdek, Pure loop mono, Pure loop maxi, Pure loop mini, Relief opdek, Sicla opdek, Tondina fat.

E Field 2

kvadrat

Designer: Alfredo Häberli
Composition: 100% Trevira CS
Height: 140 cm
Selvedge:
Weight: 430 g/mtl

Light resistance: 6-7 (ISO 1-8)
Abrasion: 100.000 Martindale
Colour: there may be slight differences

The environment: reduced environmental impact
Fireproof test BS 5852 Crib 5
BS 5852 part 1, ig. s. 0
DIN 4102 B1

EN 1021-1/2
FAR 25.853
IMO FTP Code 2010 Part 8
NF D 60 013
NF P 92 507 M1
ÖNORM B1/ Q1

SN 198 898 5.2
UNI 9175 11M
UNI 9177 Classe 1
US Cal. Bull. 117-2013



FD132



FD142



FD182



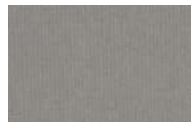
FD192



FD222



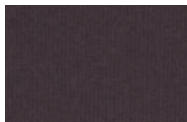
FD233



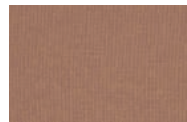
FD242



FD343



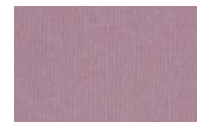
FD373



FD443



FD463



FD623



FD643



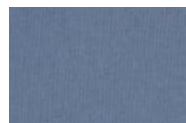
FD662



FD663



FD723



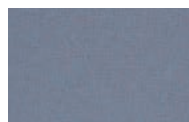
FD733



FD773



FD782



FD843



FD943



FD963

Oceanic is geschikt voor:

Bombom, Canova opdek, Flink opdek, Mali front, Pure loop mono, Pure loop maxi, Pure loop lounge, Pure loop mini, Relief opdek, Sicla opdek, Tondina fat en Woodstock opdek/front.

E Oceanic

camira

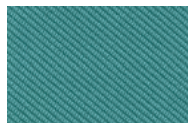
Composition: 100% post-consumer recycled polyester, including 50% SEAQUAL yarn
Weight per square meter:

497 g/m2 ±5% Heavy duty / 10 year guarantee. Independently certified to ≥100,000 Martindale cycles

Fastness to Rubbing: Wet: 4, Dry: 4 (ISO 105 - X12)
Flammability: EN 1021 - 1&2 Cigarette & Match
BS 7176 Low Hazard



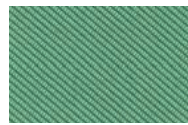
OC01



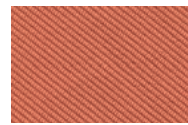
OC02



OC03



OC04



OC05



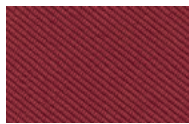
OC06



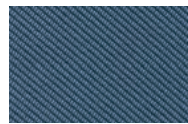
OC07



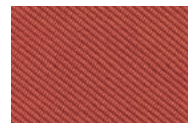
OC08



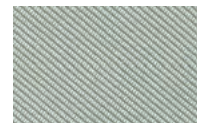
OC10



OC11



OC12



OC13



OC14



OC15



OC16



OC09

Yoredale is geschikt voor:

Bombom, Canova opdek, Flink opdek, Mali front, Pure loop mono, Pure loop maxi, Pure loop lounge, Pure loop mini, Relief opdek, Sicla opdek, Tondina fat.

E Yoredale

camira

Composition: 95% Wool, 3% Polyester, 2% Polyamide
Total width: 138 cm minimum
Weight per linear meter: 700 g/m² ±5%
("Martindale") Abrasion

resistance. Heavy duty / 10 year guarantee. Independently certified to ≥50,000 Martindale cycles

Flammability
EN 1021 - 1&2 Cigarette & Match
BS 7176 Low Hazard
ONORM B 3825 & A 3800-1 (58kg/m³ CMHR Foam)

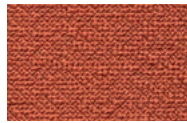
UNI 9175 Classe 1IM
BS 5852 Ignition Source 5 when FR treated BS 7176 Medium Hazard when FR treated



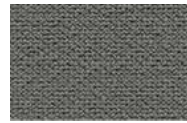
YR01



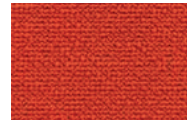
YR02



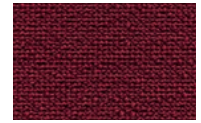
YR03



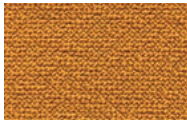
YR04



YR12



YR14



YR16



YR17



YR18



YR20



YR25



Steelcut Quartet

Stofgroep 6

Steelcut Quartet is geschikt voor:

Bombom, Canova opdek, Flink opdek, Mali front, Pure loop mono, Pure loop maxi, Pure loop lounge, Pure loop mini, Relief opdek, Sicla opdek, Tondina fat en Woodstock opdek/front.

F Steelcut Quartet

kvadrat

Designer: Frans Dijkmeijer & Giulio Ridolfo
Composizione: 90% lana vergine, 10% nylon pettinato
Altezza: 140 cm
Cimossa:
Peso: 770 g/

Resistenza alla luce: 6-7 (ISO 1-8)
Abrasion: 100.000
Martindale
Pilling: 4-5 (ISO 1-5)
Solidità allo sfregamento: 5 (Asciutto) 4-5 (Bagnato)

ISO 105-X12
Designer: Frans Dijkmeijer & Giulio Ridolfo
Composition: 90% new wool, worsted 10% nylon
Height: 140 cm
Selvedge:

Weight: 770 g/
Light resistance: 6-7 (ISO 1-8)
Abrasion: 100.000
Martindale
Pilling: 4-5 (ISO 1-5)
Fastness to rubbing: 5 (Dry)

4-5 (Wet) ISO 105-X12
Test ignifugo – Fireproof test
Fire tests AS/NZS 1530.3 AS/NZS 3837 class 2



SQ0994



SQ0944



SQ0924



SQ0764



SQ0684



SQ0664



SQ0654



SQ0644



SQ0554



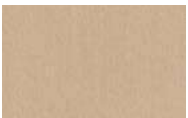
SQ0544



SQ0534



SQ0434



SQ0414



SQ0394



SQ0354



SQ0224



SQ0154



SQ0144



SQ0114

F Canvas 2

Stofgroep 6

Canvas 2 is geschikt voor alle modellen in het productoverzicht.

F Canvas 2

kvadrat

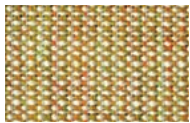
Designer: Giulio Ridolfo
Composition: 90% New wool worsted, 10% Nylon
Height: 140 cm
Selvedge: †
Weight: 480 g/mtl

Light resistance: 6-7 (ISO 1-8)
Abrasion: 100000 Martindale
Colour: there may be slight differences

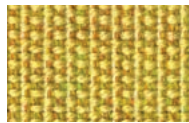
The environment: In compliance with EU environmental regulations
Fireproof test AS/NZS 1530.3 BS 5852 (ig. s. 2-3)

DIN 4102 B2
EN 1021-1/2
IMO A.652(16)
NF D 60 013
NFPA 260
UNI 9175 1IM

US Cal. Tech. Bull. 117
ONORM B1/Q1



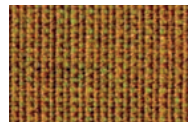
CV414



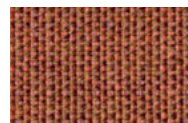
CV446



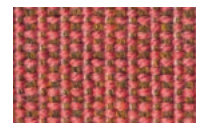
CV546



CV424



CV454



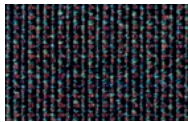
CV576



CV644



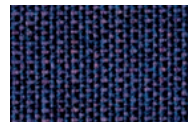
CV674



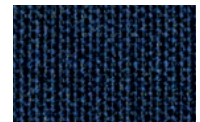
CV364



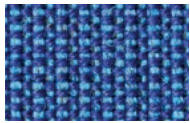
CV694



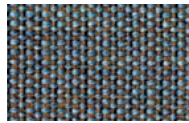
CV684



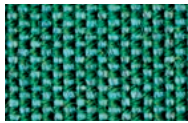
CV794



CV746



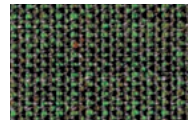
CV734



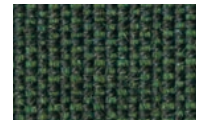
CV836



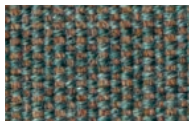
CV926



CV974



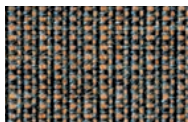
CV996



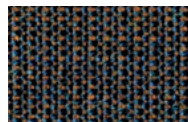
CV936



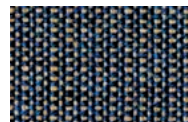
CV964



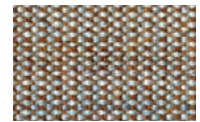
CV264



CV764



CV854



CV244



CV224



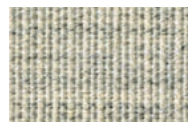
CV614



CV716



CV216



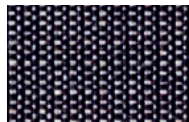
CV114



CV124



CV134



CV154



CV174

Divina 3 is geschikt voor:

Bombom, Flink opdek, Pure loop mono, Pure loop maxi, Pure loop mini, Relief opdek, Sicla opdek, Tondina fat.

G Divina 3

kvadrat

Designer: Finn Sködt
 Composition: 100% Wool
 Height: 150 cm
 Selvedge: †
 Weight: 840 g/m²
 Light resistance: 5-7 (ISO 105-B02)

Abrasion: 45000 Martindale
 Colour: there may be slight differences.
 The light colours may contain dark fibres.
 The environment: Naturele fibres / renewable resource

Fireproof test
 AS/NZS 1530.3
 BS 5852 ig. s. 5
 BS 5867, part 2, type B
 DIN 4102 B2, ÖNORM B1/Q1
 EN 1021-1/2

EN 13501, C-s1, d0, glued
 IMO A.652(16)
 NF D 60 013
 NFPA 260
 UNI 9175, 1IM
 US Cal. Tech. Bull. 117



DV106



DV171



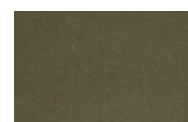
DV173



DV191



DV236



DV356



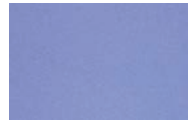
DV426



DV542



DV623



DV676



DV684



DV696



DV886



DV893



DV936



Divina Melange

Stofgroep 7

Divina Melange is geschikt voor alle modellen in het productoverzicht.

G Divina Melange 3

kvadrat

Designer: Finn Sködt
Composition: 100% Wool
Height: 150 cm
Selvedge: ↓
Weight: 840 g/m²
Light resistance: 5-7 (ISO 105-B02)

Abrasion: 45000 Martindale
Colour: there may be slight differences.
The environment: Naturele fibres / renewable resource
Fireproof test AS/NZS 1530.3

BS 5852 ig. s. 5
BS 5867, part 2, type B
DIN 4102 B2, ÖNORM B1/Q1
EN 1021-1/2
EN 13501, C-s1, d0, glued
IMO A.652(16)
NF D 60 013

NFPA 260
UNI 9175, 11M
US Cal. Tech. Bull. 117



DM120



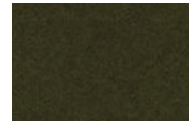
DM180



DM260



DM427



DM471



DM547



DM571



DM647



DM731



DM871

Harald 3 is geschikt voor:

Canova opdek, Flink opdek, Pure loop lounge, Tondina fat.

G Harald 3

kvadrat

Designer: Raf Simons & Fanny Aronsen
Composizione: 100% Cotone
Larghezza: 140 cm
Cimosa:
Peso: 520 g/mtl

EN 13501, C-s1, d0, glued
IMO A.652(16)
NF D 60 013
NFPA 260
UNI 9175, 11M
US Cal. Tech. Bull. 117

Resistenza alla luce: 5-6 (ISO 105-B02)
Abrasion: 100000 Martindale
Colore: possono riscontrarsi lievi differenze

L'ambiente: Fibre naturali / risorsa rinnovabile
Fireproof test AS/NZS 1530.3
BS 5852 ig. s. 5
BS 5867, part 2, type B

DIN 4102 B2, ÖNORM B1/Q1
EN 1021-1/2



HA432



HA512



HA343



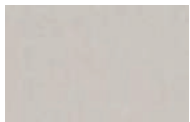
HA182



HA952



HA133



HA212



HA283



HA982



HA582

Fiord is geschikt voor:

Beetle, Bombom, Flink opdek, Mali front, Pure loop mono, Pure loop maxi, Pure loop lounge, Pure loop mini, Relief opdek, Sicla opdek, Tondina fat en Woodstock opdek/front.

G Fiord

kvadrat

Designer: Louise Sigvardt & Tone Barnung
 Composition: 92% Wool, 8% nylon
 Width: 140 cm
 Selvedge: †
 Weight: 500 g/mtl

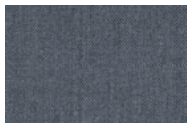
Light resistance: 5-7 (ISO 105-B02)
 Abrasion: 60000 Martindale
 Colour: there may be slight differences.
 The environment: Naturale fibres / renewable resource

Fireproof test
 BS 5852 Crib 5 with treatment
 BS 5852 part 1
 DIN 4102 B2
 EN 1021-1/2
 IMO FTP Code 2010 Part 8

NF D 60 013
 UNI 9175 IIM
 US Cal. Bull. 117-2013
 AS/NZS 3837, class 2



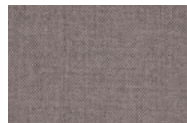
FO101



FO171



FO191



FO271



FO451



FO521



FO581



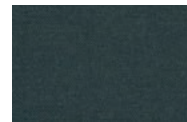
FO751



FO771



FO971



FO991

Patio is geschikt voor:
Canova opdek, Flink opdek, Pure loop lounge.

G **Patio**

kvadrat

Designer: Karina Nielsen
Rios
Composition: 100% Trevira
CS
Height: 140 cm
Selvedge: ↔
Weight: 560 g/lin.m

Light resistance: 7 (ISO
105-B02)
Abrasion: 50000 Martindale
Colour: there may be slight
differences.
The light colours may
contain dark fibres.

The environment: In
compliance with EU
environmental regulations
Fireproof test
BS 5852 ignition source 5
BS 5852 part 1 ignition
source 0

DIN 4102 B1, EN 1021-1/2
IMO FTP Code 2010 Part 8
NF D 60 013
NF P 92 507 M1
UNI 9175 1IM
US Cal. Bull. 117-2013
ÖNORM B1/Q1



					
PA100	PA110	PA140	PA150	PA170	PA200
					
PA210	PA220	PA230	PA340	PA370	PA410
					
PA430	PA440	PA450	PA550	PA570	PA650
					
PA730	PA740	PA750	PA780	PA840	PA970

Safire is geschikt voor:
Bombom, Pure loop lounge.

H Safire

kvadrat

Category: Sahco upholstery
Pattern: Solid
Composition:
43% viscose 17% polyacrylic 15%
new wool 9% cotton 8% polyester
8% linen

Width: Approx. 140 cm (Approx. 55")
Repeat: Approx. 0/0 cm (Approx.
0"/0")
Weight: 1,010 g/lin. m (32.58 oz/sq ft)
Fire tests BS 5852 crib 5 with
treatment • BS 5852 part 1 • EN 1021-

1/2 • US Cal. Bull. 117-2013 • IMO FTP
Code 2010 Part 8
There are differing requirements
concerning the flame-retardancy of
textiles dependent on the area of
application, country or even region.

Our textiles pass the majority of
international standards and are also
tested for a selection of regional
requirements. ISO 105-X12



SA0001



SA0002



SA0003



SA0004



SA0005



SA0006



SA0007



SA0008



SA0009



SA0010



SA0011



SA0012



SA0013



SA0014



SA0015



SA0016



SA0017