


Stofkaart

Softline



BEKIJK ALLE PRODUCTEN ONLINE

 FP collection

BOUCLE



342



343



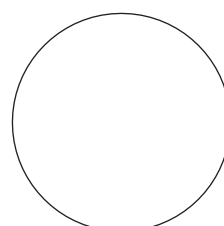
346



344

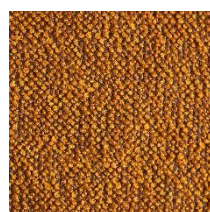


345



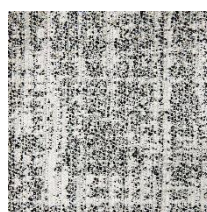
347

ISOLA



348

PIOZZANO



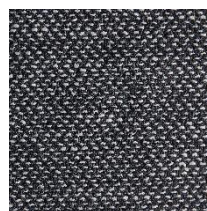
993-AJ

QAUS



993-AI

PUNTINO



996-PW

BOUCLE

EN

Composition: 34% Viscose, 33% Polyacrylic, 17% Wool, 8% Polyester, 4% Linen, 4% Cotton
Maintenance: Vacuum regularly or ① professional Dry-clean
Abrasion Resistance: 50.000 Martindale cycles

ISOLA

EN

Composition: 42% Polyester, 27% Wool, 26% Polyacrylic, 5% Cotton
Maintenance: Vacuum regularly or ① professional Dry-clean
Resistance: Abrasion 60.000 Martindale cycles

PIOZZANO

EN

Composition: 78% Cotton, 22% Polyester
Maintenance: Vacuum regularly or ① professional Dry-clean
Abrasion resistance: 30.000 Martindale cycles

QAUS

EN

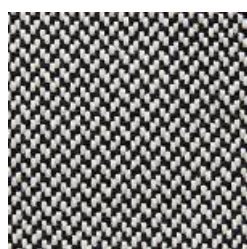
Composition: 37% Polyester, 21% Polyacrylic, 19% Viscose, 14% Cotton, 8% Linen, 1% Polyamide
Maintenance: Vacuum regularly or ① professional Dry-clean
Abrasion resistance: 40.000 Martindale cycles

PUNTINO

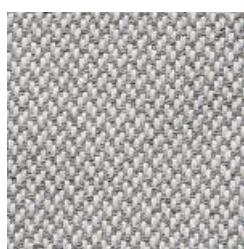
EN

Composition: 42% Viscose, 32% Linen, 11% Polyester, 9% Cotton, 6% Polyamide
Maintenance: Vacuum regularly or ① professional Dry-clean
Abrasion Resistance: 100.000 Martindale cycles

CENTO



470



471



472

CENTO

EN

Composition: 85% Cotton, 15% Polyester
Maintenance: Vacuum regularly or professional Dry-clean
Abrasion Resistance: 35.000 Martindale cycles
Flammability: EN 1021 part 1&2

DE

Zusammensetzung: 85% Baumwolle, 15% Polyester
Reinigung: Regelmässig staubsaugen. Professionelle Trockenreinigung
Scheuerfestigkeit: 35.000 Martindale
Feuerschutz: EN 1021 part 1&2

FR

Composition: 85% Coton, 15% Polyester
Nettoyage: Aspirer régulièrement. Nettoyage á sec professionnel
Résistance á l'abrasion: 35.000 cycles Martindale
Normes au feu: EN 1021 source d'ignition 1&2

DK

Materiale: 85% Bomuld, 15% Polyester
Rengøring: Støvsug regelmæssigt eller professionel rens
Slidstyrke: 35.000 Martindale
Flammesikring: EN 1021 part 1&2

ECO COTTON



511



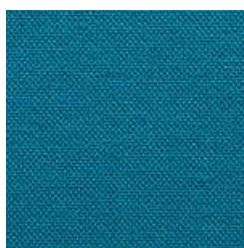
512



513



514



515



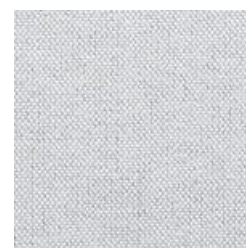
516



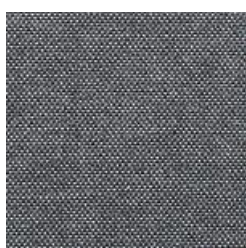
517



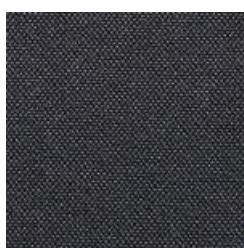
518



519



520



521



522



523

ECO COTTON

EN

Composition: 75% Cotton, 20% Poly Acrylic, 5% Other Fibers
Maintenance: Vacuum regularly or professional Dry-clean
Abrasion Resistance: 40.000 Martindale cycles
Flammability: EN 1021 part 1&2

DE

Zusammensetzung: 75% Baumwolle, 20% Poly Akryl, 5% Andere Faser
Reinigung: Regelmässig staubsaugen. Professionelle Trockenreinigung
Scheuerfestigkeit: 40.000 Martindale
Feuerschutz: EN 1021 part 1&2

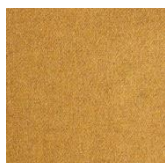
FR

Composition: 75% Coton, 20% Polyacryl, 5% Autres fibres
Nettoyage: Aspirer régulièrement. Nettoyage à sec professionnel
Résistance à l'abrasion: 40.000 cycles Martindale
Normes au feu: EN 1021 source d'ignition 1&2

DK

Materiale: 75% Bomuld, 20% Poly Akryl, 5% Andre Fibre
Rengøring: Støvsug regelmæssigt eller professionel rens
Slidstyrke: 40.000 Martindale
Flammesikring: EN 1021 part 1&2

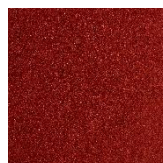
FELT MELANGE New colours



296



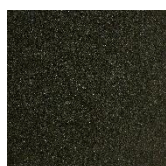
298



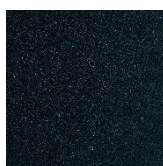
297



293



294



295



292



289



300



299

FELT MELANGE

EN

Composition: 70% Wool, 25% Polyamide, 3% Acrylic, 2% Polyester
Maintenance: Vacuum regularly or professional Dry-clean
Abrasion Resistance: 90.000 Martindale cycles
Flammability: EN 1021 part 1&2
BS 5852-1: 1979

DE

Zusammensetzung: 70% Wolle, 25% Polyamid, 3% Akryl, 2% Polyester
Reinigung: Regelmässig staubsaugen. Professionelle Trockenreinigung
Scheuerfestigkeit: 90.000 Martindale
Feuerschutz: EN 1021 part 1&2
BS 5852-1: 1979

FR

Composition: 70% Laine, 25% Polyamide, 3% Acryl, 2% Polyester
Nettoyage: Aspirer régulièrement. Nettoyage á sec professionnel
Résistance á l'abrasion: 90.000 cycles Martindale
Normes au feu: EN 1021 source d'ignition 1&2
BS 5852-1: 1979

DK

Materiale: 70% Uld, 25% Polyamide, 3% Akryl, 2% Polyester
Rengøring: Støvsug regelmæssigt eller professionel rens
Slidstyrke: 90.000 Martindale
Flammesikring: EN 1021 part 1&2
BS 5852-1: 1979

FELT MELANGE



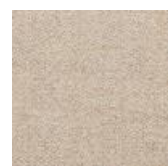
582



610



612



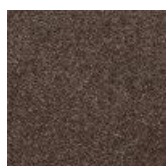
619



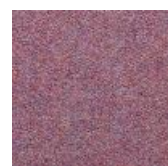
620



623



635



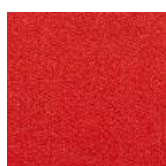
640



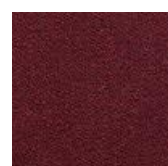
641



642



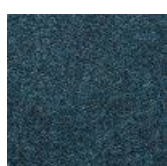
650



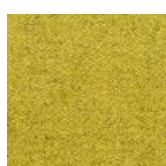
651



652



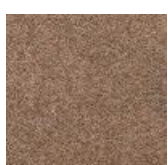
846



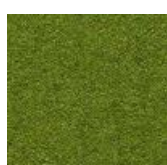
847



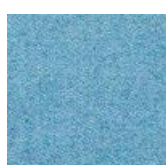
848



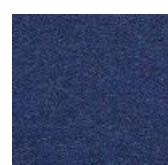
849



855



858



859

FELT MELANGE

EN

Composition: 70% Wool, 25% Polyamide, 3% Acrylic, 2% Polyester
Maintenance: Vacuum regularly or professional Dry-clean
Abrasion Resistance: 90.000 Martindale cycles
Flammability: EN 1021 part 1&2
BS 5852-1: 1979

DE

Zusammensetzung: 70% Wolle, 25% Polyamid, 3% Akryl, 2% Polyester
Reinigung: Regelmässig staubsaugen. Professionelle Trockenreinigung
Scheuerfestigkeit: 90.000 Martindale
Feuerschutz: EN 1021 part 1&2
BS 5852-1: 1979

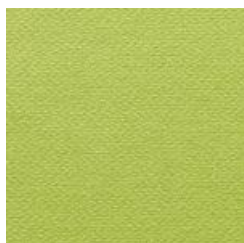
FR

Composition: 70% Laine, 25% Polyamide, 3% Acryl, 2% Polyester
Nettoyage: Aspirer régulièrement. Nettoyage á sec professionnel
Résistance á l'abrasion: 90.000 cycles Martindale
Normes au feu: EN 1021 source d'ignition 1&2
BS 5852-1: 1979

DK

Materiale: 70% Uld, 25% Polyamide, 3% Akryl, 2% Polyester
Rengøring: Støvsug regelmæssigt eller professionel rens
Slidstyrke: 90.000 Martindale
Flammesikring: EN 1021 part 1&2
BS 5852-1: 1979

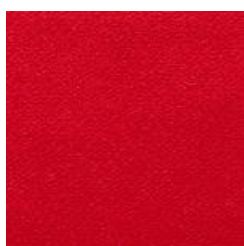
FELT



579



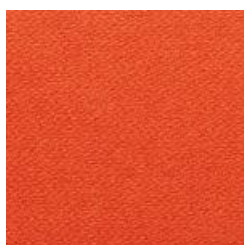
581



588



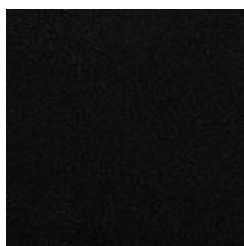
622



624



629



636

FELT

EN

Composition: 80% Wool, 20% Polyamide
Maintenance: Vacuum regularly or professional Dry-clean
Abrasion Resistance: 90.000 Martindale cycles
Flammability: EN 1021 part 1&2
BS 5852-1: 1979

DE

Zusammensetzung: 80% Wolle, 20% Polyamid
Reinigung: Regelmässig staubsaugen. Professionelle Trockenreinigung
Scheuerfestigkeit: 90.000 Martindale
Feuerschutz: EN 1021 part 1&2
BS 5852-1: 1979

FR

Composition: 80% Laine, 20% Polyamide
Nettoyage: Aspirer régulièrement. Nettoyage á sec professionnel
Résistance á l'abrasion: 90.000 cycles Martindale
Normes au feu: EN 1021 source d'ignition 1&2
BS 5852-1: 1979

DK

Materiale: 80% Uld, 20% Polyamid
Rengøring: Støvsug regelmæssigt eller professionel rens
Slidstyrke: 90.000 Martindale
Flammesikring: EN 1021 part 1&2
BS 5852-1: 1979

GRIFFON



501



502



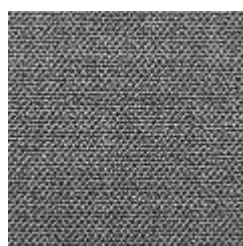
503



504



505



506



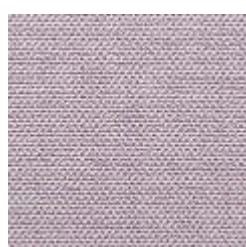
507



830



995-FE



995-FF



995-TD



995-TE



995-TH

GRIFFON

EN

Composition: 62% Poly Acrylic, 27% Polyester, 11% Polypropylene
Maintenance: Vacuum regularly or professional Dry-clean
Abrasion Resistance: 30.000 Martindale cycles

DE

Zusammensetzung: 62% Poly Acryl, 27% Polyester, 11% Polypropylene
Reinigung: Regelmässig staubsaugen. Professionelle Trockenreinigung
Scheuerfestigkeit: 30.000 Martindale

FR

Composition: 62% Poly Acrylique, 27% Polyester, 11% Polypropylène
Nettoyage: Aspirer régulièrement. Nettoyage á sec professionnel
Résistance á l'abrasion: 30.000 cycles Martindale

DK

Materiale: 62% Poly akryl, 27% Polyester, 11% Polypropylene
Rengøring: Støvsug regelmæssigt eller professionel rens
Slidstyrke: 30.000 Martindale

MAREMOSSO



530



531



532



536



534



535



995-kc



995-kb

MAREMOSSO

EN

Composition: 54% Polyester, 26% Cotton, 20% Linnen
Maintenance: Vacuum regularly or professional Dry-clean
Abrasion Resistance: 25.000 Martindale cycles

DE

Zusammensetzung: 54% Polyester, 26% BAumwolle, 20% Linnen
Reinigung: Regelmässig staubsaugen. Professionelle Trockenreinigung
Scheuerfestigkeit: 25.000 Martindale

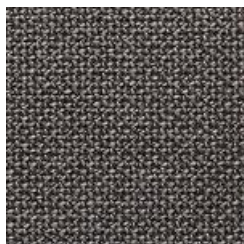
FR

Composition: 54% Polyester, 26% Coton, 20% Linnen
Nettoyage: Aspirer régulièrement. Nettoyage á sec professionnel
Résistance á l'abrasion: 25.000 cycles Martindale

DK

Materiale: 54% Polyester, 26% Bomuld, 20% Linnen
Rengøring: Støvsug regelmæssigt eller professionel rens
Slidstyrke: 25.000 Martindale

NORDIC



480



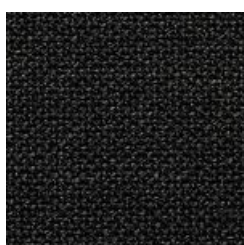
481



482



483



484



485

NORDIC

EN

Composition: 38% Cotton, 24% Acrylic, 18% Viscose, 12% Wool, 6% Polyester, 2% Polyamid
Maintenance: Vacuum regularly or professional Dry-clean
Abrasion Resistance: 62.000 Martindale cycles
Flammability: EN 1021 part 1&2

DE

Zusammensetzung: 38% Baumwolle, 24% Akryl, 18% Viscose, 12% Wolle, 6% Polyester, 2% Polyamid
Reinigung: Regelmässig staubsaugen. Professionelle Trockenreinigung
Scheuerfestigkeit: 62.000 Martindale
Feuerschutz: EN 1021 part 1&2

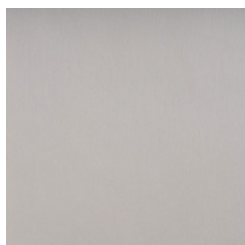
FR

Composition: 38% Coton, 24% Acryl, 18% Viscose, 12% Laine, 6% Polyester, 2% Polyamid
Nettoyage: Aspirer régulièrement. Nettoyage á sec professionnel
Résistance á l'abrasion: 62.000 cycles Martindale
Normes au feu: EN 1021 part 1&2

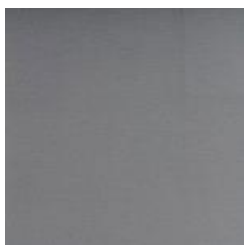
DK

Materiale: 38% Bomuld, 24% Akryl, 18% Viscose, 12% Uld, 6% Polyester, 2% Polyamid
Rengøring: Støvsug regelmæssigt eller professionel rens
Slidstyrke: 62.000 Martindale
Flammesikring: EN 1021 part 1&2

TEMPO / SILVERTEX Silverguard



273



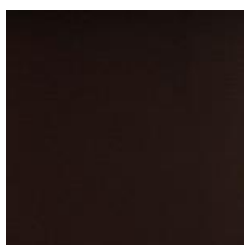
274



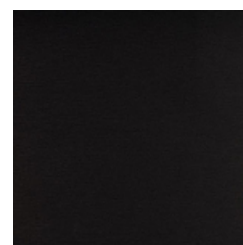
988-JL



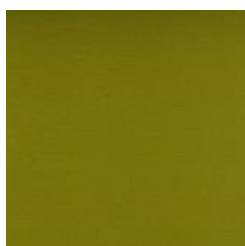
276



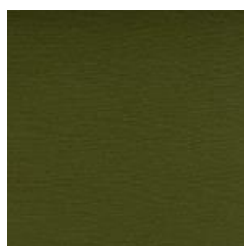
279



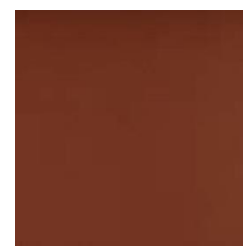
275



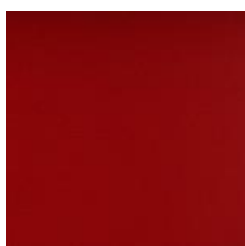
271



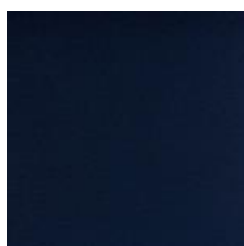
999-SS



999-SE



277



278

TEMPO / SILVERTEX

EN

Composition: 100% Vinyl
Backing: 100% Polyester
Maintenance: Vacuum regularly, professional Dry-clean or wipe with a damp cloth
Abrasion Resistance: 300.000 Martindale cycles
Flammability: EN 1021 part 1&2
NF P92-503 / M2

DE

Zusammensetzung: 100% Vinyl
Rückseite: 100% Polyester
Reinigung: Regelmässig staubsaugen. Professionelle Trockenreinigung
Alternativ dazu mit einem feuchten abwischen
Scheuerfestigkeit: 300.000 Martindale
Feuerschutz: EN 1021 part 1&2
NF P92-503 / M2

FR

Composition: 100% Vinyl
Backing: 100% Polyester
Nettoyage: Aspirer régulièrement. Nettoyage á sec professionnel,
sinon essuyer avec un linge humide
Résistance á l'abrasion: 300.000 cycles Martindale
Normes au feu: EN 1021 part 1&2
NF P92-503 / M2

DK

Materiale: 100% Vinyl
Backing: 100% Polyester
Rengøring: Støvsug regelmæssigt, professionel rens eller tør med en fugtig klud
Slidstyrke: 300.000 Martindale
Flammesikring: EN 1021 part 1&2
NF P92-503 / M2

Reference TEMPO / SILVERTEX

271 TEMPO / SILVERTEX 122-5008 Pistacho
273 TEMPO / SILVERTEX 122-4004 Ice
274 TEMPO / SILVERTEX 122-4001 Plata
275 TEMPO / SILVERTEX 122-9002 Carbon
276 TEMPO / SILVERTEX 122-0009 Taupe
277 TEMPO / SILVERTEX 122-2011 Red
278 TEMPO / SILVERTEX 122-3007 Sapphire
279 TEMPO / SILVERTEX 122-4024 Meteor
999-SE TEMPO / SILVERTEX 122-1014 Umber
988-JL TEMPO / SILVERTEX 122-4011 Sterling
999-SS TEMPO / SILVERTEX 122-5020 Basil

TUNDRA



474



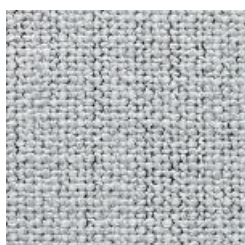
475



476



478



479



996-EC



996-EF

TUNDRA

EN

Composition: 42% Viscose, 38% Cotton, 14% Poly acrylic, 6% Polyester
Maintenance: Vacuum regularly or professional Dry-clean
Abrasion Resistance: 30.000 Martindale cycles
Flammability: EN 1021 part 1&2

DE

Zusammensetzung: 42% Viscose, 38% Baumwolle, 14% Poly Akryl, 6% Polyester
Reinigung: Regelmässig staubsaugen. Professionelle Trockenreinigung
Scheuerfestigkeit: 30.000 Martindale
Feuerschutz: EN 1021 part 1&2

FR

Composition: 42% Viscose, 38% Coton, 14% Poly acryl, 6% Polyester
Nettoyage: Aspirer régulièrement. Nettoyage á sec professionnel
Résistance á l'abrasion: 30.000 cycles Martindale
Normes au feu: EN 1021 part 1&2

DK

Materiale: 42% Viscose, 38% Bomuld, 14% Poly akryl, 6% Polyester
Rengøring: Støvsug regelmæssigt eller professionel rens
Slidstyrke: 30.000 Martindale
Flammesikring: EN 1021 part 1&2

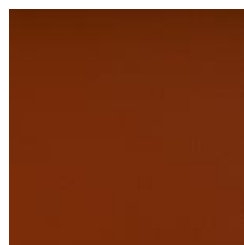
VALENCIA



998-SE



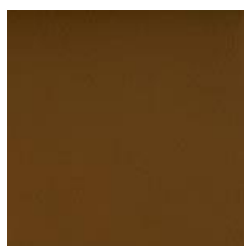
999-RQ



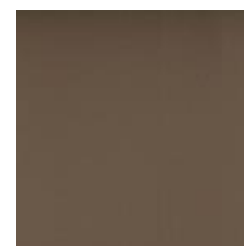
999-RG



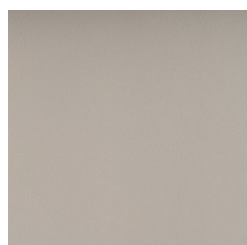
999-RF



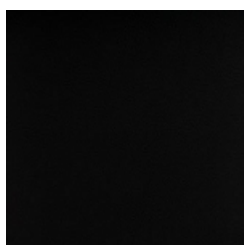
998-DO



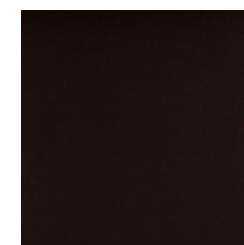
268



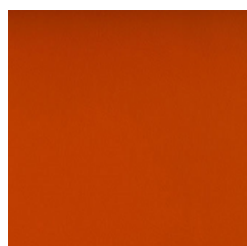
262



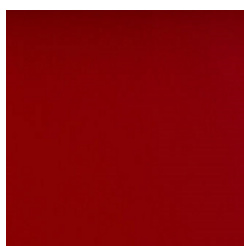
259



264



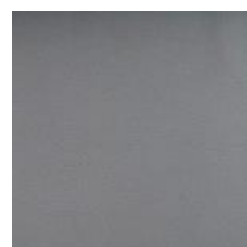
265



258



266



269



267

VALENCIA

EN

Composition: 100% Vinyl
Backing: 100% Polyester
Maintenance: Vacuum regularly, professional Dry-clean or wipe with a damp cloth
Abrasion Resistance: 300.000 Martindale cycles
Flammability: EN 1021 part 1&2
NF P92-503 / M2

DE

Zusammensetzung: 100% Vinyl
Rückseite: 100% Polyester
Reinigung: Regelmässig staubsaugen. Professionelle Trockenreinigung
Alternativ dazu mit einem feuchten abwischen
Scheuerfestigkeit: 300.000 Martindale
Feuerschutz: EN 1021 part 1&2
NF P92-503 / M2

FR

Composition: 100% Vinyl
Backing: 100% Polyester
Nettoyage: Aspirer régulièrement. Nettoyage á sec professionnel,
sinon essuyer avec un linge humide
Résistance á l'abrasion: 300.000 cycles Martindale
Normes au feu: EN 1021 part 1&2
NF P92-503 / M2

DK

Materiale: 100% Vinyl
Backing: 100% Polyester
Rengøring: Støvsug regelmæssigt, professionel rens eller tør med en fugtig klud
Slidstyrke: 300.000 Martindale
Flammesikring: EN 1021 part 1&2
NF P92-503 / M2

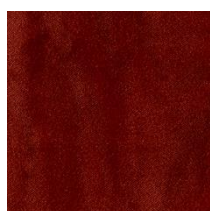
Reference VALENCIA

258 VALENCIA 107-2075 Red
259 VALENCIA 107-9035 Black
262 VALENCIA 107-8032 White
264 VALENCIA 107-0020 Mocha
265 VALENCIA 107-6019 Orange
266 VALENCIA 107-5041 Apple
267 VALENCIA 107-3001 Lavender
268 VALENCIA 107-0034 Taupe
269 VALENCIA 107-4043 Platinum
998-DO VALENCIA 107-0002 Cognac
998-SE VALENCIA 107-2111 Squash
999-RQ VALENCIA 107-6013 Melone
999-RG VALENCIA 107-6003 Nectarine
999-RF VALENCIA 107-5001 Olive

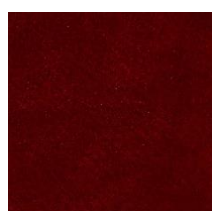
SOFTLINE A/S

Kidnakken 5
DK-4930 Maribo
Denmark
T: +4554160680
E: info@softline.dk
softlinefurniture.com

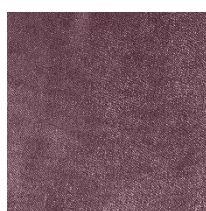
VELVET



308



309



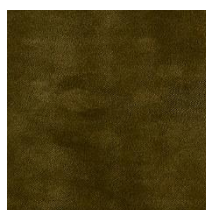
310



311



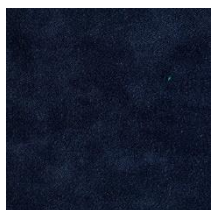
312



303



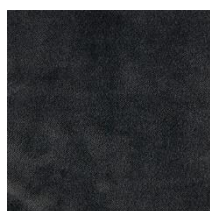
304



288



305



306

VELVET

EN

Composition: 100% Polyester
Maintenance: Vacuum regularly or professional Dry-clean
Abrasion Resistance: 40.000 Martindale cycles

DE

Zusammensetzung: 100% Polyester
Polyamid Reinigung: Regelmässig staubsaugen. Professionelle Trockenreinigung
Scheuerfestigkeit: 40.000 Martindale

FR

Composition: 100% Polyester
Nettoyage: Aspirer régulièrement. Nettoyage á sec professionnel
Résistance á l'abrasion: 40.000 cycles Martindale

DK

Materiale: 100% Polyester
Rengøring: Støvsug regelmæssigt eller professionel rens
Slidstyrke: 40.000 Martindale

VISION



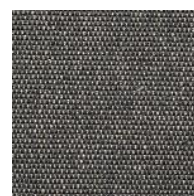
457



445



399



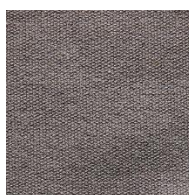
439



443



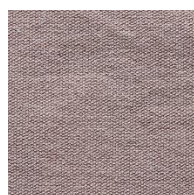
449



526



446



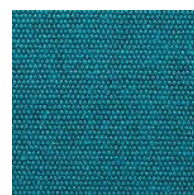
395



452



442



455



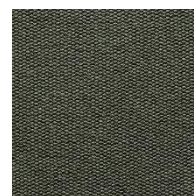
450



441



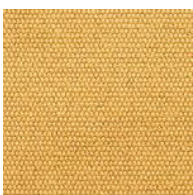
527



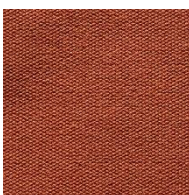
528



396



454



397



448



453



398

VISION

EN

Composition: 85% Cotton, 15% Polyester
Maintenance: Vacuum regularly or professional Dry-clean
Abrasion Resistance: 35.000 Martindale cycles
Flammability: EN 1021 part 1&2

DE

Zusammensetzung: 85% Baumwolle, 15% Polyester
Reinigung: Regelmässig staubsaugen. Professionelle Trockenreinigung
Scheuerfestigkeit: 35.000 Martindale
Feuerschutz: EN 1021 part 1&2

FR

Composition: 85% Coton, 15% Polyester
Nettoyage: Aspirer régulièrement. Nettoyage á sec professionnel
Résistance á l'abrasion: 35.000 cycles Martindale
Normes au feu: EN 1021 part 1&2

DK

Materiale: 85% Bomuld, 15% Polyester
Rengøring: Støvsug regelmæssigt eller professionel rens
Slidstyrke: 35.000 Martindale
Flammesikring: EN 1021 part 1&2

FABRICS

**SOFT
LINE**

To see the complete collection of fabrics offered by SOFTLINE, click the links below.

Main Fabric Collection

SOFTLINE

- [BOUCLE, ISOLA & PUNTINO](#)
- [CENTO](#)
- [ECO COTTON](#)
- [FELT](#)
- [FELT MELANGE](#)
- [FELT MELANGE NEW COLOURS](#)
- [GRIFFON](#)
- [MAREMOSSO](#)
- [NORDIC](#)
- [TEMPO / SILVERTEX](#)
- [TUNDRA](#)
- [VALENCIA](#)
- [VELVET](#)
- [VISION](#)

KVADRAT

- [DIVINA](#)
- [DIVINA MD](#)
- [DIVINA MELANGE](#)
- [HALLINGDAL](#)
- [REMIX](#)
- [STEELCUT](#)
- [STEELCUT TRIO](#)

CAMIRA

- [BLAZER](#)
- [MAIN LINE FLAX](#)
- [MAIN LINE PLUS](#)
- [SYNERGY](#)

ELMOSOFT

- [11073 LIGHT GREY](#)
- [33004 BROWN](#)
- [99999 BLACK](#)
- [54035 COGNAC](#)

SVENSSON

- [RAMI](#)

MAHARAM

- [MERIT](#)

STEEL AND WOOD

- [STEEL AND WOOD COLOURS](#)

Additional Fabrics

CAMIRA

- [ERA](#)
- [HEMP](#)
- [OCEANIC](#)
- [PATINA](#)
- [QUEST](#)
- [SUMI](#)
- [YOREDALE](#)

DE PLOEG

- [MONZA](#)
- [MONZA MELANGE](#)

GABRIEL

- [CHILI](#)
 - [CRISP](#)
 - [CURA](#)
 - [FAME](#)
 - [STEP](#)
 - [STEP MELANGE](#)
-

KVADRAT

- [CANVAS 2](#)
- [CLARA 2](#)
- [FIORD 2](#)
- [FOSS](#)
- [RE-WOOL](#)
- [TONUS 4](#)

NEVOTEX

- [ILLUSION](#)
-

Care and Maintenance

Please see: softlinefurniture.com/en/care-and-maintenance/

Removable covers and cleaning

All covers are removable for professional dry-cleaning or replacement.
Choose the correct cleaning method based on the specifications for each fabric quality.

Regarding FRAME, LUBI and ORLANDO, the covers should be removed by a professional only.

Price list covers

The price list for new covers is available on request at: info@softline.dk

Fabric samples

Fabric cards can be ordered at: info@softline.dk