

A dining table with four blue chairs and a vase of flowers on top, set against a teal background with text.

Stofkaart

FP Custom

*Elan & Elite*



**Secret**

**CONTRACT & OUTDOOR  
COLLECTION**

Secret è il tessuto spalmato ignifugo di Flukso® dalla mano morbida simile a quella della vera pelle.

Al suo interno Secret cela nuovi polimeri ancora più resistenti all'esposizione solare, alle intemperie e all'acqua di mare. Secret è stato progettato per realizzare morbidi imbottiti da interno e prodotti tecnici da outdoor. La sua retro-struttura elastica in poliestere gli permette di adattarsi alle nuove geometrie del mobile imbottito con maggiori garanzie di resistenza e durata nel tempo.

Secret is a flame retardant coated fabric by Flukso®, it is soft to the touch and similar to real leather.

Secret contains new polymers that are even more resistant to sun exposure, weathering and sea water. Secret has been designed to realize soft interior upholstery and technical products for the outdoors. Its elastic backing, made of polyester, allows it to adapt to the new geometries of upholstery with greater assurance of strength and durability.

## SETTORI / SECTORS



## APPLICAZIONI / USES



## CARATTERISTICHE / FEATURES



## SCHEDA TECNICA / TECHNICAL DETAILS

SCHEDA TECNICA / TECHNICAL DETAILS	UNITÀ / UNIT	NORMA / TEST METHOD	VALORI / LIMIT VALUE
Peso / Weight	g/m <sup>2</sup>	-	540 +/- 10
Altezza / Width	cm	-	140
Composizione / Composition	-	76% PVC - 22% PES - 2% PU	
Resistenza all'abrasione / Abrasion resistance (Martindale)	cicli/cycles	ISO 5470-2	60.000
Adesione / Adhesion	N	ISO 2411	> 30
Resistenza alla trazione / Tensile strenght	N	UNI EN ISO 1421	long. 600 trasv. 240
Allungamento a rottura / Elongation at break	%	UNI EN ISO 1421	long. 70 trasv. 110
Resistenza alla lacerazione / Tear strenght	N	UNI EN ISO 4674	long. 30 trasv. 30
Resistenza alle flessioni / Bending strenght	cicli/cycles	UNI 4818-13	100.000
Solidità colori allo sfregamento a secco / Colour fastness to dry rubbing	grey scale	ISO 105-X12	5
Solidità colori allo sfregamento a umido / Colour fastness to wet rubbing	grey scale	ISO 105-X12	5
Solidità colori alla luce / Colour fastness to light (Xenotest)	blue scale	ISO 105-B02	6/7

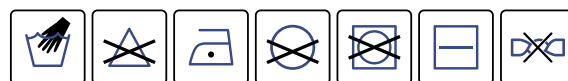


### RESISTENZA AL FUOCO FIRE RESISTANCE

UNI 9175 classe 1IM  
EN 1021-1  
EN 1021-2  
BS 5852-1 cigarette test  
BS 5852-1 match test  
TB 117:2013

**NORME DI PULIZIA** — Per le istruzioni dettagliate di lavaggio e manutenzione del tessuto e per conoscere i prodotti più adatti alla sua pulizia, consultare il sito [www.flukso.it](http://www.flukso.it).

**CLEANING INSTRUCTIONS** — Check our website [www.flukso.it](http://www.flukso.it) for detailed washing and maintenance instructions related to the fabric and to know the most suitable cleaning products.



Made in Italy

Campione gratuito di modico valore non destinato alla vendita, esente IVA punto D - Art. 2 DPR 26.10.1972 n°633. Esente DDT punto 6 - Art. 4 DPR 06.10.1978 n°627.

Questi valori sono dati a titolo indicativo ed in buona fede e non possono essere considerati in alcun caso vincolanti. L'impiego del prodotto deve essere valutato in base a ciò che si deve realizzare. Non si risponde del suo utilizzo per impieghi impropri. Sono ammesse leggere differenze di colori tra lotti diversi.

The overmentioned data correspond to average values communicated in good faith, but they cannot be considered as a contract document. The product use has to be considered in term of what has to be realized. The product cannot be held up responsible when it is improperly used. Slight colour differences among several lots are admitted.

**Secret**

**CONTRACT & OUTDOOR  
COLLECTION**



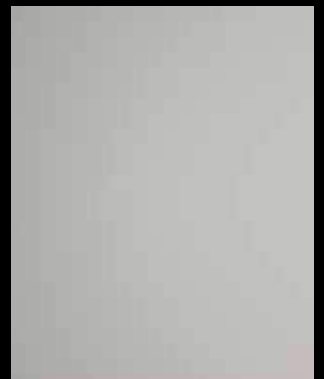
**1033**



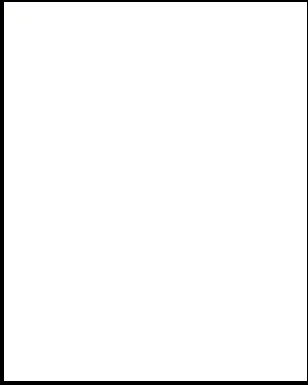
**1034**



**1035**



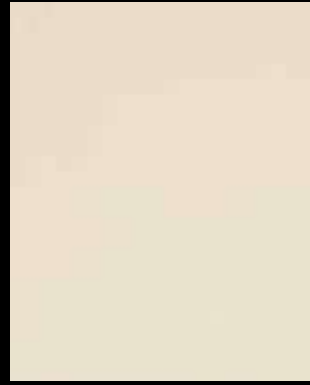
**1036**



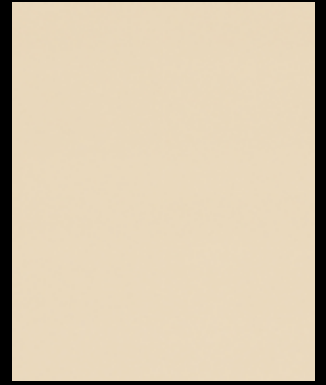
1001



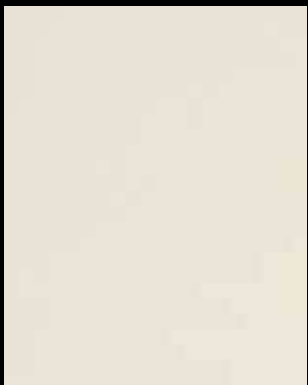
1025



1002



1003



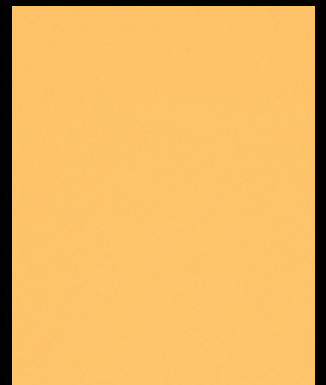
1004



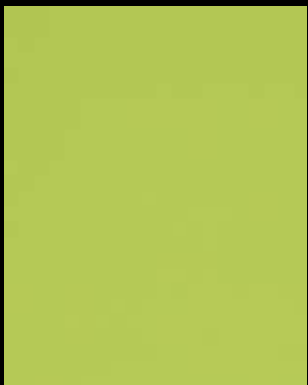
1018



1029



1007



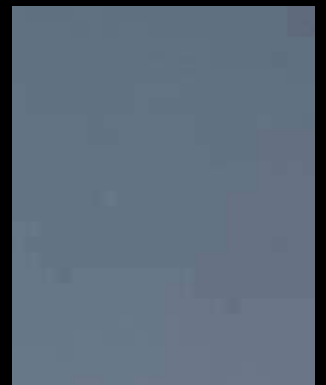
1011



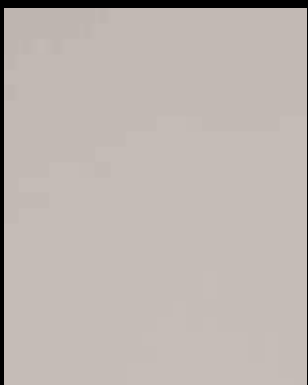
1028



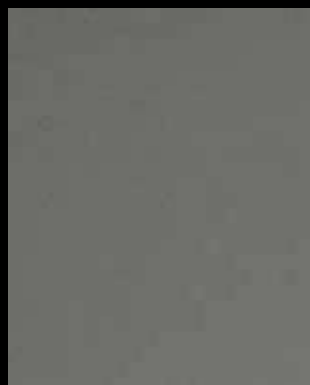
1012



1021



1015



1024



1016



1017



1026



1027



1005



1006



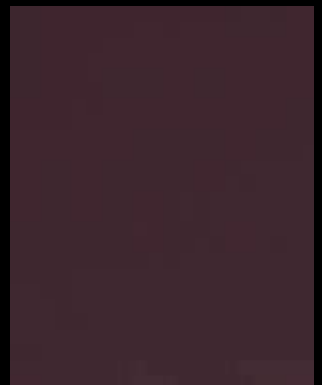
1008



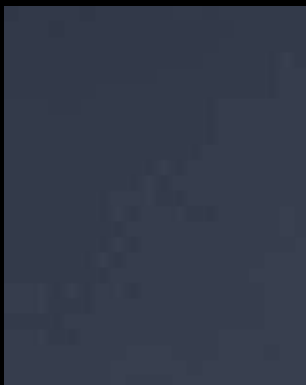
1009



1019



1020



1014



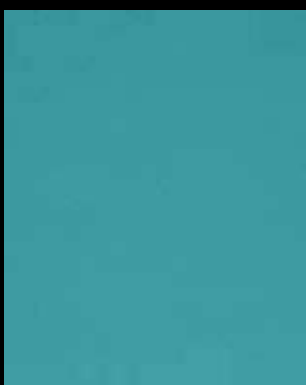
1022



1010



1023



1013



1030



1031



1032



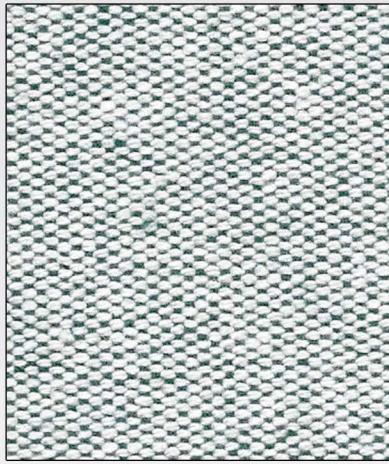
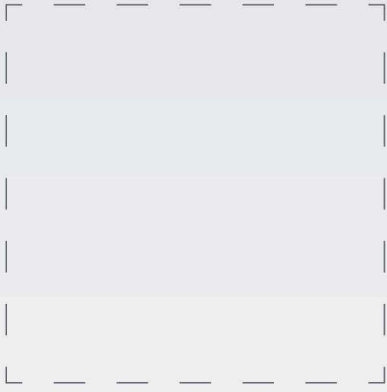
# Chioccarello

Viale dell'Industria 4, 36036 Torrelvicino (Vicenza) Italy  
Tel./Fax. +39 0445 661651 +39 0445 1654761  
[www.chioccarello.it](http://www.chioccarello.it) - [info@chioccarello.it](mailto:info@chioccarello.it)  
P.I. e C.F. 03845630247

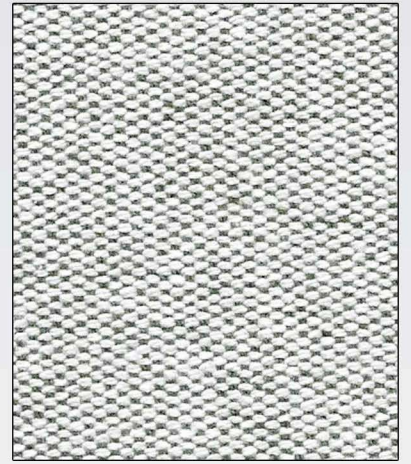
*Disca*

*Disca Coax*

MADE in ITALY



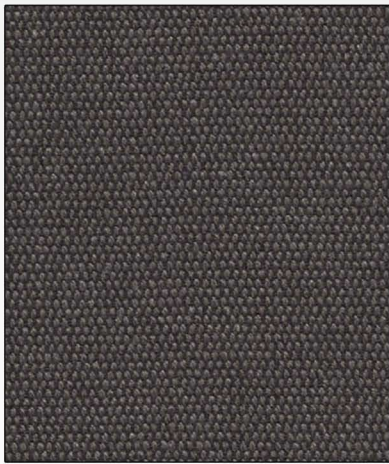
46



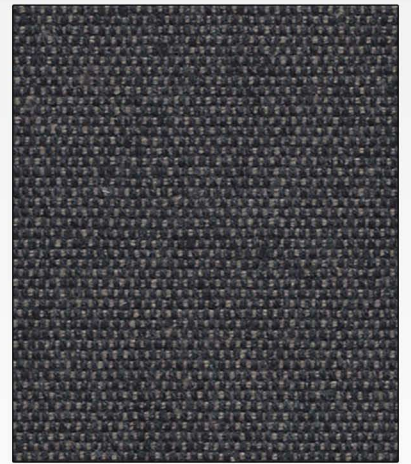
51



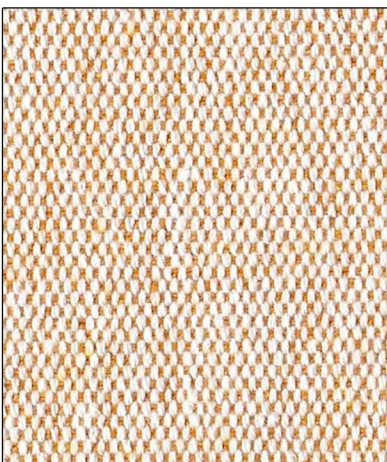
01



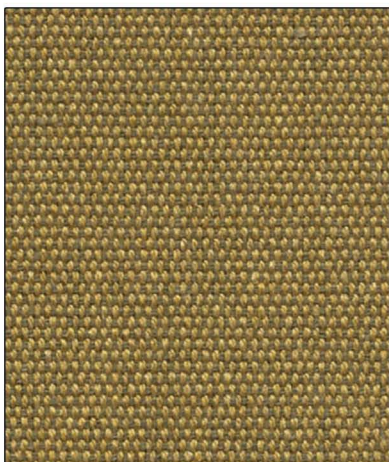
30



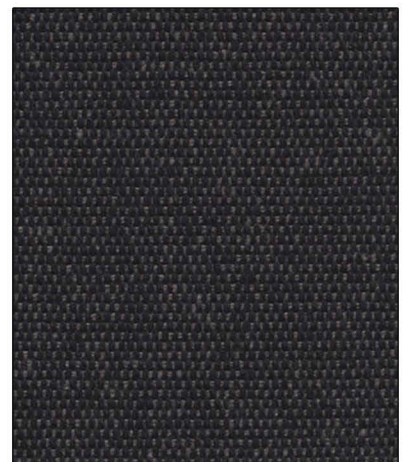
09



50



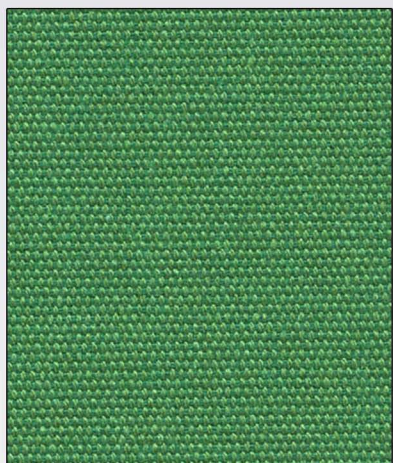
31



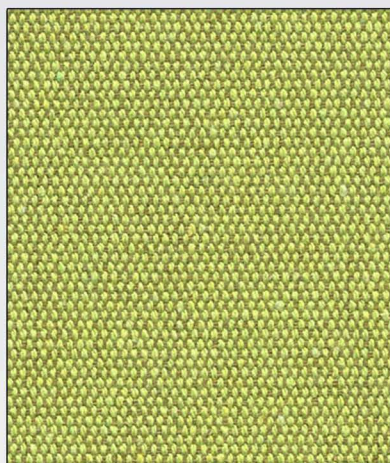
10

*MADE in ITALY*

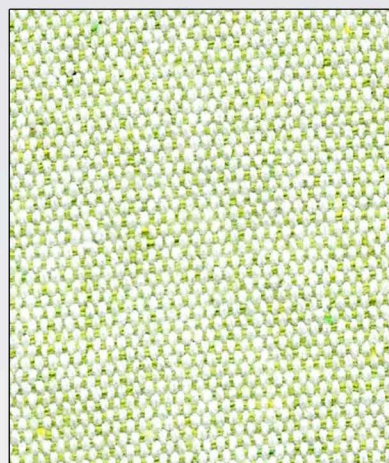




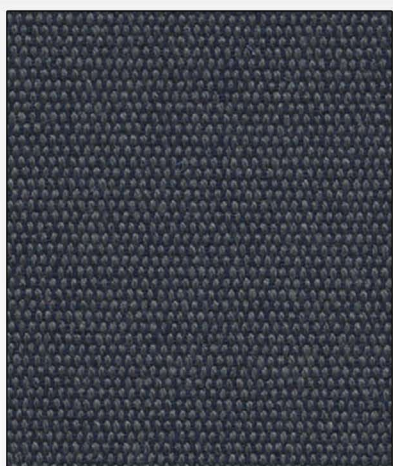
41



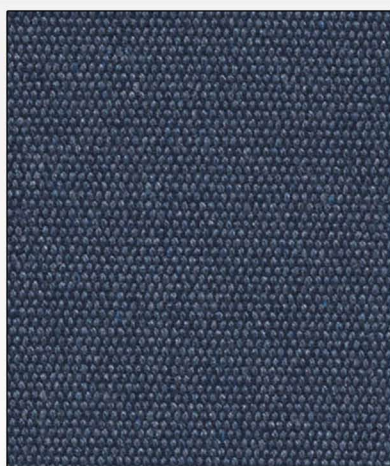
40



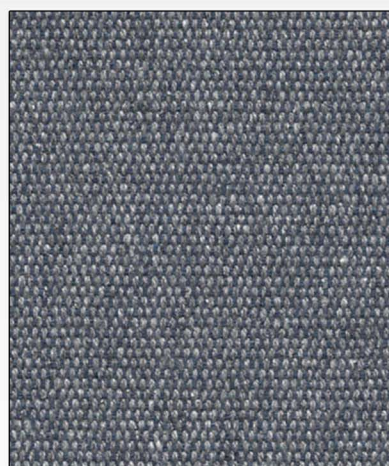
52



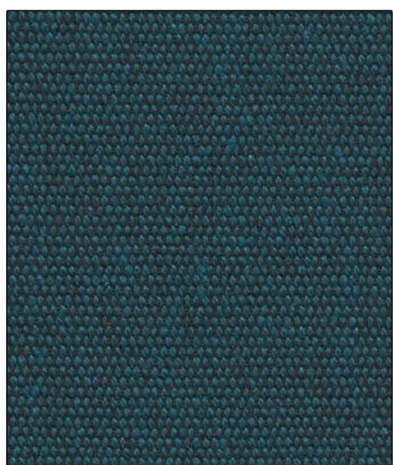
27



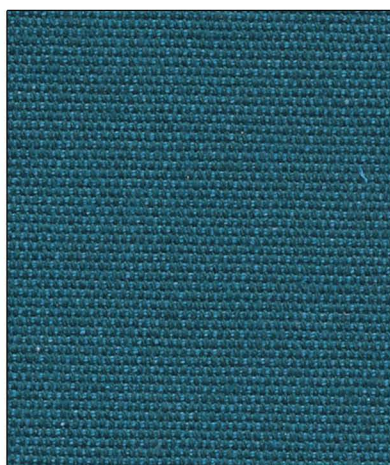
12



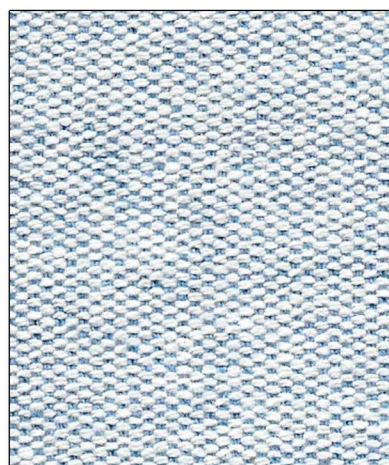
33



28

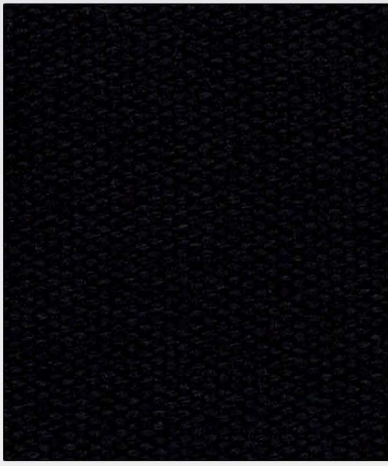


35

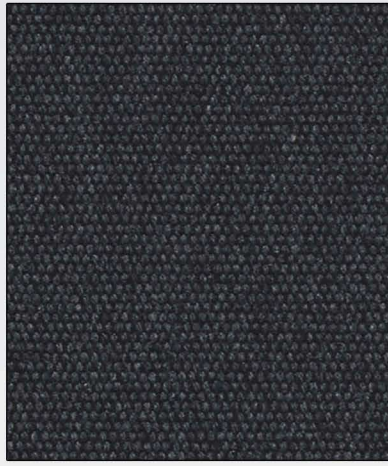


47

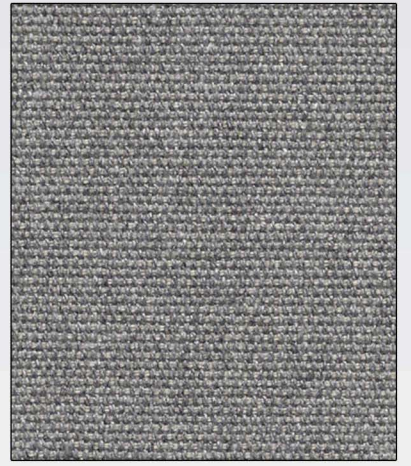
*MADE in ITALY*



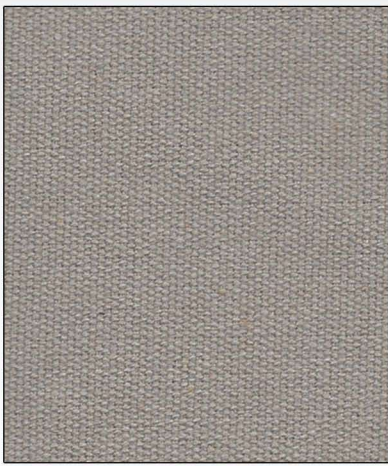
11



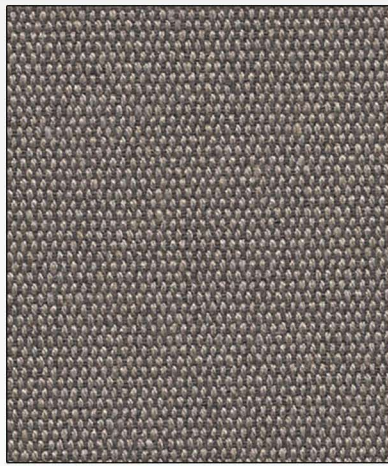
26



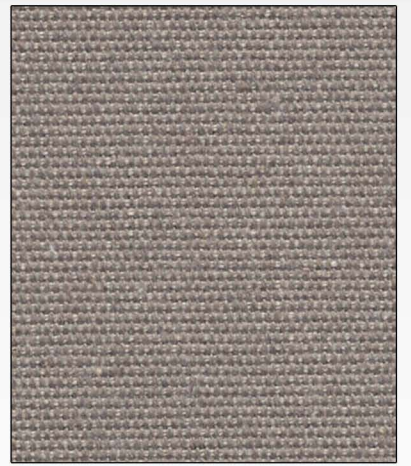
08



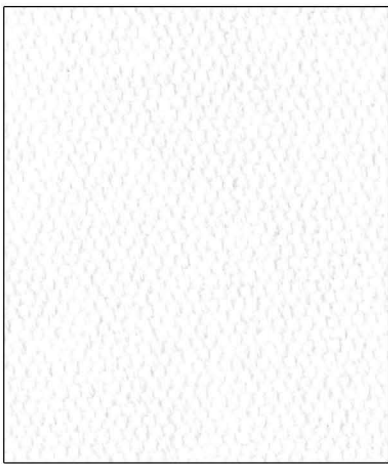
23



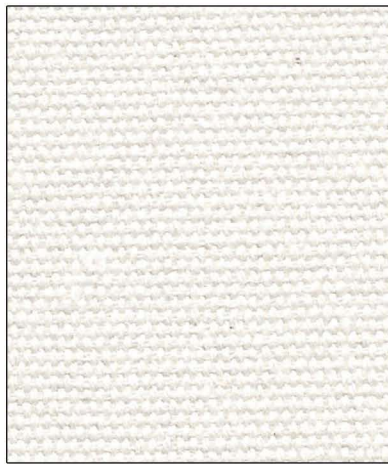
07



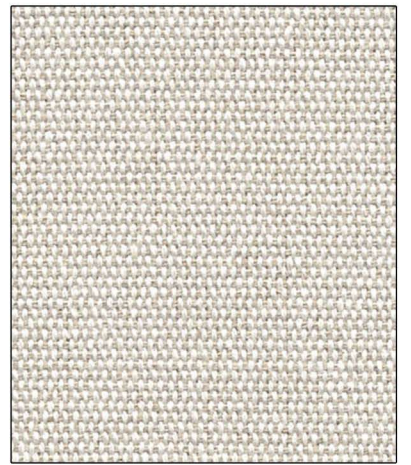
06



53

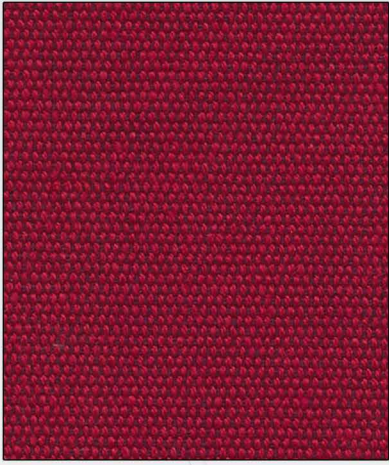


13

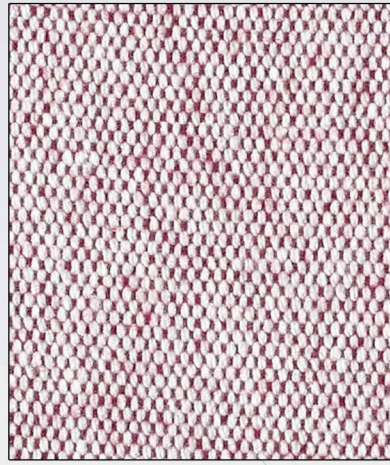


05

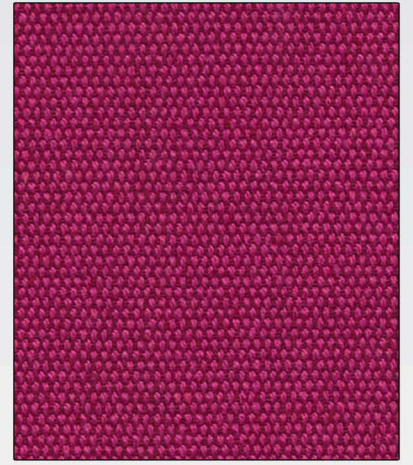
*MADE in ITALY*



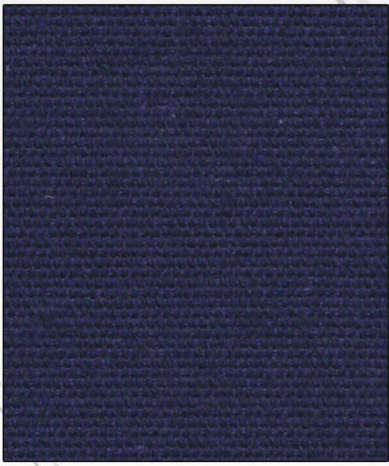
24



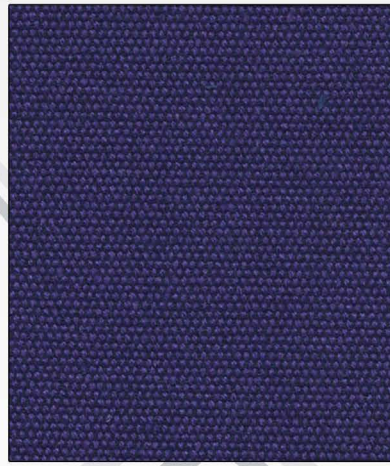
48



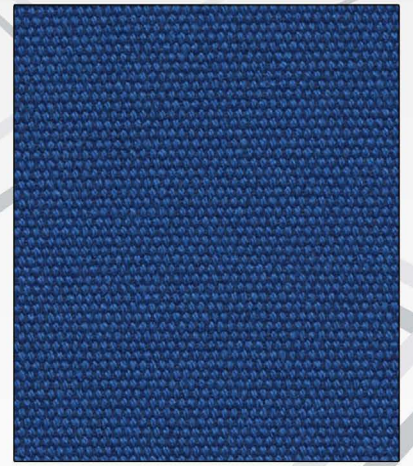
43



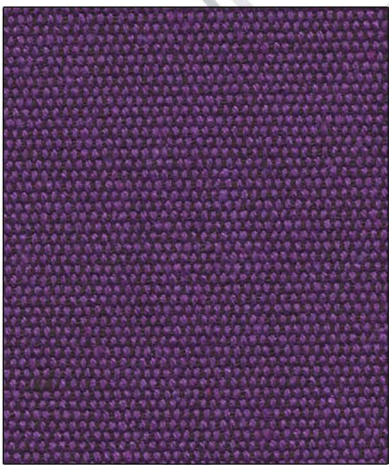
38



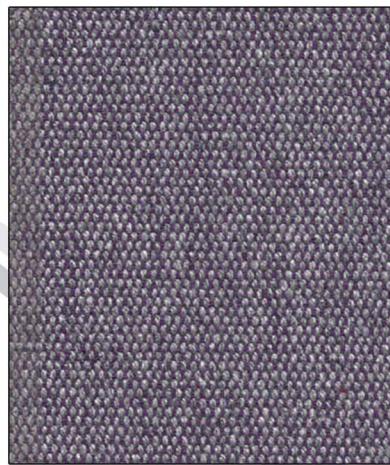
37



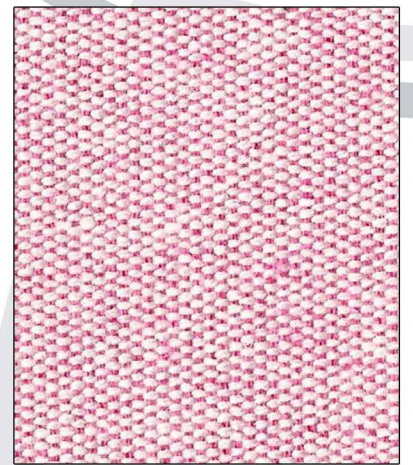
36



17



32



49

MADE in ITALY

## DISCO

I	UK	D	F	E
<b>Composizione</b> 70% cotone 20 % acrilico 5% viscosa 5% lino	<b>Composition</b> 70% cotton 20% acrylic 5% viscose 5% linen	<b>Zusammensetzung</b> 70% baumwolle 20% polyacryl 5% viscose 5% leinen	<b>Materiale</b> 70% coton 20% acrylique 5% viscose 5% lin	<b>Composición</b> 70% algodón 20% acrílico 5% viscosa 5% lino
<b>Peso</b> 430 g/m <sup>2</sup> ± 15	<b>Weight</b> 430 g/m <sup>2</sup> ± 15	<b>Gewicht</b> 430 g/m <sup>2</sup> ± 15	<b>Poids</b> 430 g/m <sup>2</sup> ± 15	<b>Peso</b> 430 g/m <sup>2</sup> ± 15
<b>Altezza</b> 150 cm ± 2	<b>Width</b> 150 cm ± 2	<b>Breite</b> 150 cm ± 2	<b>Längeur</b> 150 cm ± 2	<b>Ancho</b> 150 cm ± 2
<b>Lunghezza Rotolo</b> 30 mt ±10%	<b>Roll lenght</b> 30 mt ±10%	<b>Rolle länge</b> 30 mt ±10%	<b>Longueur rotulea</b> 30 mt ±10%	<b>Longitud rollo</b> 30 mt ±10%
<b>Resistenza all'abrasione</b> 50000 cicli	<b>Abrasion Resistance</b> 50000 cycles	<b>Scheuerfestigkeit</b> 50000 Scheuertouren	<b>Résistance à l'abrasion</b> 50000 tours	<b>Resistencia a la abrasión</b> 50000 ciclos
<b>Resistenza alla luce (EN ISO 105-B02)</b> 4/5	<b>Light Fastness (EN ISO 105-B02)</b> 4/5	<b>Lichtechtheit (EN ISO 105-B02)</b> 4/5	<b>Solidité à la lumière (EN ISO 105-B02)</b> 4/5	<b>Solidez a la luz (EN ISO 105-B02)</b> 4/5
<b>Resistenza allo sfregamento (EN ISO 105-X12)</b> Umido: 4 Secco: 5	<b>Fastness to Rubbing (EN ISO 105-X12)</b> Wet: 4 Dry: 5	<b>Reibechtheit (EN ISO 105-X12)</b> Nass: 4 Trocken: 5	<b>Solidité au frottement (EN ISO 105-X12)</b> Mouillé: 4 Sec: 5	<b>Solidez al rozamiento (EN ISO 105-X12)</b> Húmedo: 4 Seco: 5
<b>Infiammabilità IMO</b>	<b>Flammability IMO</b>	<b>Feuersicherung IMO</b>	<b>Flammabilité IMO</b>	<b>Inflamabilidad IMO</b>
<b>Assorbimento acustico: UNI EN ISO 354:2003</b>	<b>Acoustic Absorption: UNI EN ISO 354:2003</b>	<b>Schallabsorptions: UNI EN ISO 354:2003</b>	<b>absorption acoustique: UNI EN ISO 354:2003</b>	<b>absorción acústica: UNI EN ISO 354:2003</b>
<b>Solo su richiesta: idro-oleo repellente</b>	<b>Only on request: water repellency and oil repellency</b>	<b>Nur Auf: anfrange: hydrophobe und oleophobe</b>	<b>Seulement sur demande: hydrofuge et oléofuge</b>	<b>Soló a petición: repelencia al agua y repelencia al aceite</b>
<b>Colore</b> Leggere differenze di colore fra una partita e l'altra sono da considerarsi normali	<b>Colour</b> Slight color differences between one lot and another have to be considered within commercial tolerance	<b>Farbabweichungen</b> Leichte farbunterschiede sind zwischen zwei Partien als normal su betrachten	<b>Coloris</b> Légères différences de couleur entre un lot et l'autre doivent être considérés comme étant normales	<b>Color</b> ligeras diferencias de color entre un lote y el otro son normales



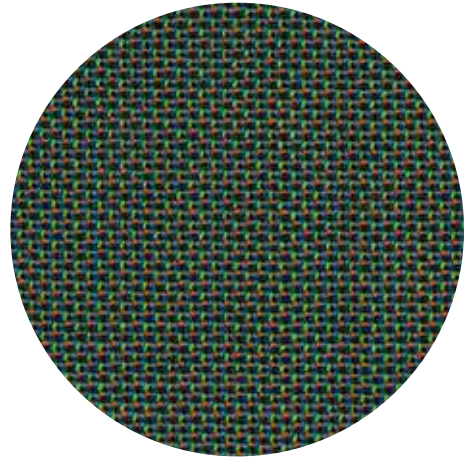
Stock Service



Cut Service



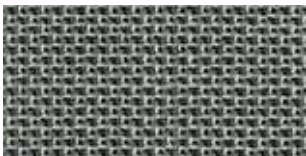
MADE in ITALY



# MORPH

---

by Gabriel



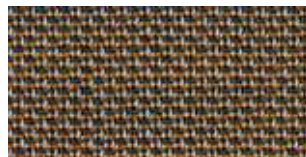
4101



5101



2101



3102



12101



1101



3101



11101



8101



6101



10101



9102



7101



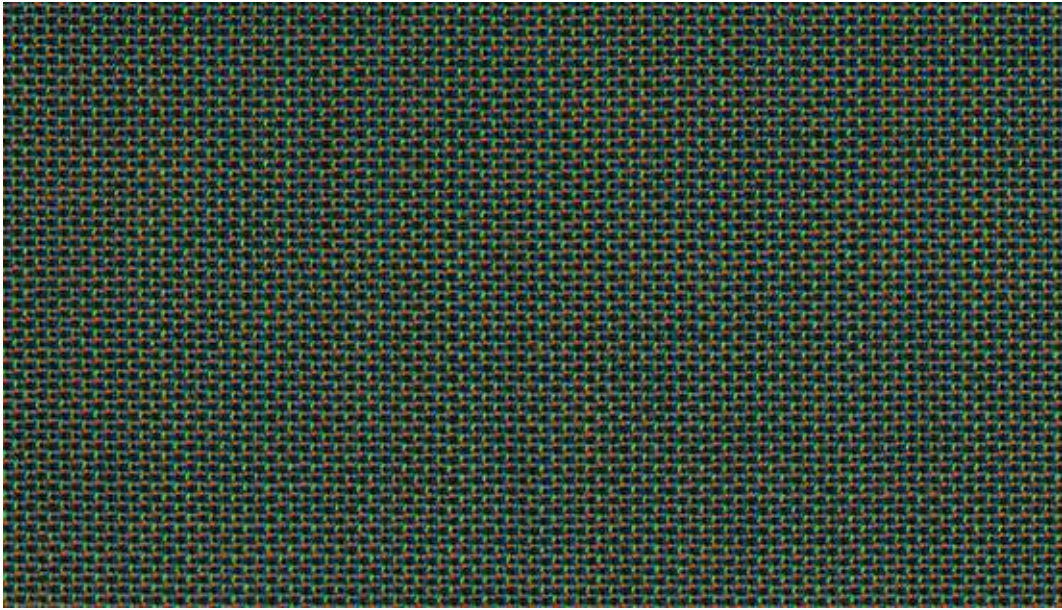
2103



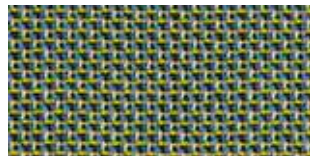
9101



2102



14101



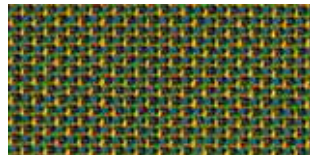
4102



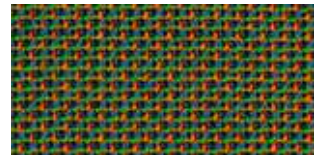
12102



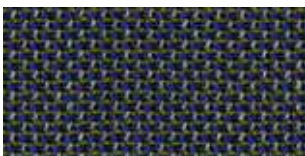
13101



11102



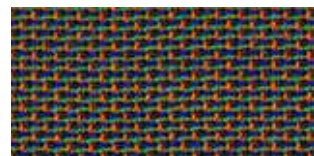
10102



2104



14101



10103





## **FOCUS MELANGE**

by Gabriel



60309



62117



60310



62118



63112



60311



61238



64241



60312



61239



64242



60900



61237



61236



60099



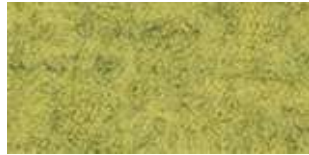
61242



61235



68247



68244



68245



68234



68235



61243



68249



68246



61240



68248



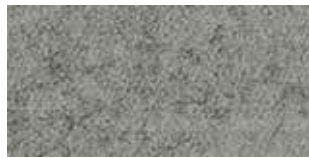
68247



61241



64245



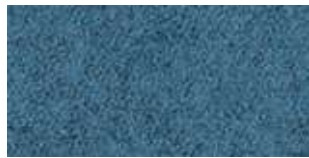
66209



66219



65133



66222



66220



65132



66223



66221



64243



66224



66210



64244



66211



60308